

Gateway Lite BT

General Installation Guide

GBL-9230-1



1. Introduction

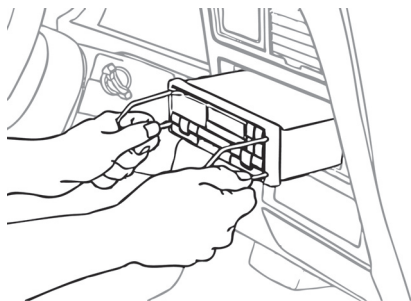
Gateway Lite BT enables music playback from a USB storage or iPod through your vehicle's entertainment system, using the buttons of the car stereo for basic control. This device also offers basic hands free functionality via the original buttons of the head unit (Radio). Gateway Lite BT is designed to give easy to manage control in cars where it is not possible to display text, therefore only basic control is available (track skip functions and USB folder browsing).

2. Getting started

At first, please make sure that the vehicle compatibility is correct. The Gateway Lite BT is available in specific versions for different vehicle types, therefore the exact operation and installation may be different in each case. **IMPORTANT! During the installation always make sure that the ignition key is removed from the car, the radio is switched off and that you have the security code of the head unit (radio) available (if applicable).**

3. Remove the head unit

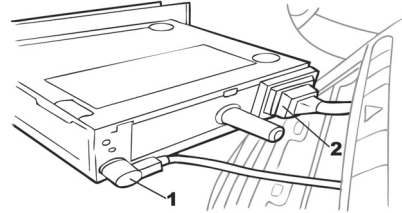
First, carefully remove your vehicle's existing factory fitted head unit according to the factory instructions and using the correct tools.



In some cases, removing the head unit will also require panel removal. Contact your vehicle's dealer or a Dension authorized installer/supplier for more information.

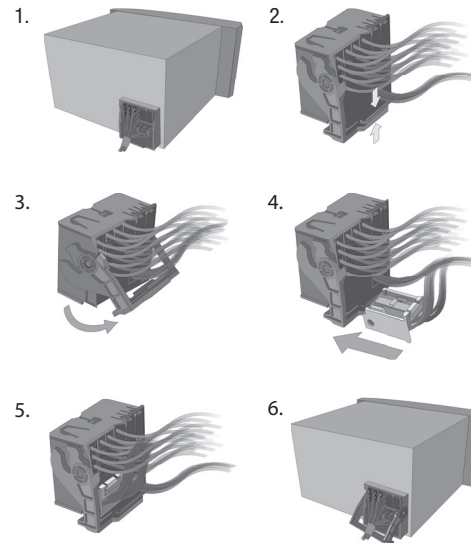
4. Fitting the Gateway harness

Once the head unit has been removed, disconnect the antenna cable (1) and then unclip the main wiring connector from the head unit (2). This will differ in all makes and manufacturers.

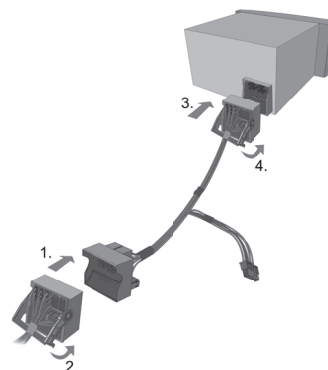


Once the main radio cable is removed, you can connect the Gateway with the supplied cable to the head unit. The connection methods may vary by each head unit versions, here are the possible situations:

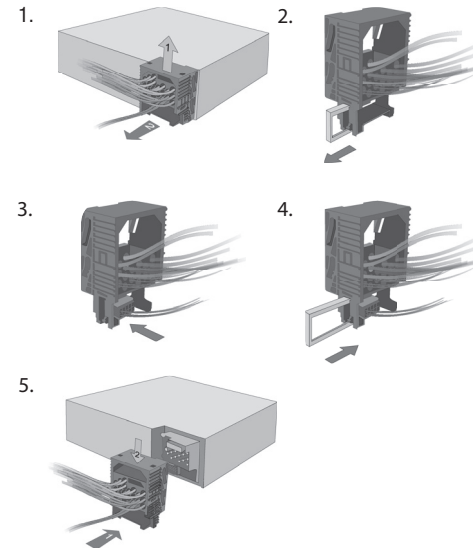
Cars with quadlock connector (not break-in)



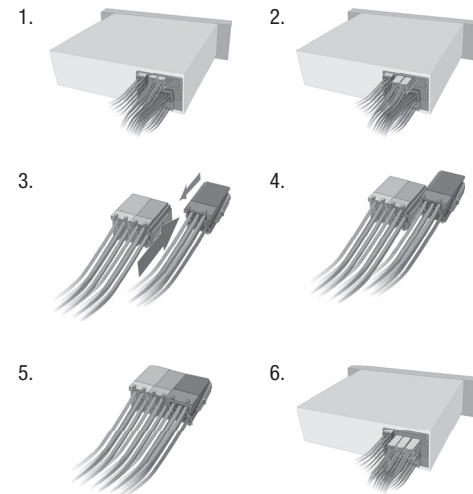
Cars with quadlock connector (break-in)



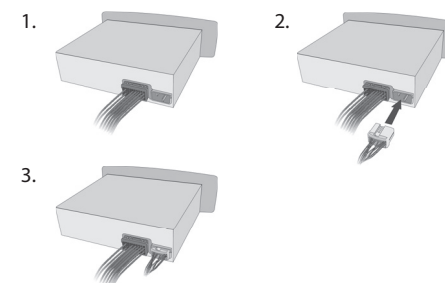
BMW's with 17-pin connector



Cars with mini ISO connector



If the CDC connector has separated housing:



Please note: Some car side harness versions of the Gateway may include a separate brown and/or black cable. The free brown cable needs to be connected to the phone mute pin of the radio (not necessary). The free black lead must be grounded/connected to the metal chassis of the radio (or car).

5. Connections on the Gateway's hardware

Connect the 12 (or 18) pin molex plug to the car side of the Gateway Lite BT module. You can place the hardware of the Gateway behind the head unit or into the glove box. Connect the Dension 30-pin Dock Cable or the Dension Lightning adapter for Gateway into the 9-pin round connector. If you want to add your USB stick then you can plug it directly in the USB port or you can plug in a USB extension cable, but in this case please use an as short cable as you can, because of power loss. You can lead these cables through the dashboard to an appropriate location.

Warning! Do not trap the cables, or leave them in a position where they may become trapped after refitting the head unit.

6. Fitting the microphone

The 3.5mm Jack connector is dedicated for the microphone of the Gateway which is used for hands free. The microphone will work best when it is kept away from all noise sources (open windows or speakers) and close to the driver. So the best place to ensure perfect sound is to install at the central interior light or rear view mirror in the centre of the windscreen. There are clips that help you mounting the microphone. The optimal place for the microphone depends on many factors, so it is recommended that you try different installation places before finalizing the microphone installation.

7. Test and refit

Before you refit the head unit, test the Gateway with your car audio making sure all connections are correct and that you have full functionality.

Note: If during testing you notice any changes or inconsistencies in the way the car's electrical system operates, disconnect the Gateway product immediately and consult your dealer. When you have tested everything, refit your head unit. Do not trap the cables, or leave them in a position where they may become trapped after refitting the head unit. We supply cable ties to mount the Gateway module. Please mount the module away from heat or damp surfaces. Refit is the reversal of the removal process for your specific vehicle, as per your manufacturer's instructions.

8. Disclaimer

If your car's electrical system begins to behave in an unpredictable way please disconnect the Gateway Lite BT interface physically immediately and have it checked by your installer. Dension and its authorized distributors and retailers are not liable for any incidental consequential or indirect damages or loss and do not assume liability for any diagnostic fees. The use of handheld devices while driving maybe subject to government legislation. Please ensure that your use of the Dension device complies with applicable traffic laws. Dension does not assume liability for any events resulting from the illegal or irresponsible use of handheld devices while driving. Dension reserves the right to modify its products or specifications without prior notice.

9. Warranty

Dension devices carry a one-year limited warranty that protects you from defects in material and workmanship of products sold by Dension or its authorized distributors and retailers. Dension does not warrant any installation work or assume liability for any damage caused due to negligence, improper installation or operation. For warranty claims, proof of purchase is required.

10. Update and support

If you need further assistance in using your Dension product, please contact your local supplier or visit our website at www.dension.com. You can ask for the help of our trained technicians through the channels described on our support page. Please check the download section for the latest firmware version and product documentation, as these may provide additional features or easier use of the product.

Gateway Lite BT

General User Guide

GBL-9231-1



1. Introduction

Gateway Lite BT enables music playback from a USB storage or iPod through your vehicle's entertainment system, using the buttons of the car stereo for basic control. This device also offers basic hands free functionality via the original buttons of the head unit (Radio). Gateway Lite BT is designed to give easy to manage control, in cars where it is not possible to display text, therefore only basic control is available (track skip functions and USB folder browsing).

2. Supported audio devices

USB: USB stick and external hard drive with one partition

File System: FAT32

Storage capacity: up to 64GB music content

Music Format: MP3, WMA (except for DRM protected, WMA-lossless, WMA-Pro) and WAV

iPods¹:

- iPod (4th generation)
- iPod nano (1st, 2nd, 3rd, 4th, 5th and 6th generation)
- iPod mini
- iPod photo 4G
- iPod video 5G
- iPod classic
- iPod touch (1st, 2nd, 3rd and 4th generation)

iPhones¹:

- iPhone 4s, 4
- iPhone 3GS, 3G

¹These require the optional Dension 30-pin Dock Cable (IPDC1GW).

Devices supported using the optional Dension Lightning Adapter for Gateway (LIA1GW0):

- iPhone 5s, 5c, 5, 6, 6 plus
- iPod touch (5th generation)
- iPod nano (7th generation)

The Dension Lightning Adapter ends in a USB port, it means that beside the Adapter you will also need a Lightning USB cable (IPLC1GW) or a cradle (IP6LCRP).

3. Getting started

Before you start, please check that your iPod or iPhone is up-to-date. You can get the latest firmware updates via iTunes or the settings menu on your device. If you use a USB device, please check the above mentioned requirements.

4. Operation

Switch on your car radio and select the 'CD changer' source. This is usually done by pressing the CDC or CD button, or pressing the CD button twice. If in doubt, consult the audio section of your car's manual. Connect your iPod or USB drive to the Gateway. The first file on the device starts to play. If the Gateway has been used earlier, music will play from your iPod or USB from the point last played. **If both are connected, the last used source will continue to play.** Switching off the radio (or the ignition) will stop playback and put the devices connected to standby. Next/back and random/repeat/scan buttons (radio dependent) work according to their usual function. If neither the iPod nor a USB drive is connected 'CD5/Track99' is displayed with the counter running.

5. Sources

iPod

Two operation modes are available:

- iPod User Interface (iPod UI)
- iPod Gateway Interface (iPod GW)

In **iPod UI mode** the original user interface of the iPod **remains active** (i.e. the click wheel still works) so you can use it for control and browsing as normally.

During playback the radio displays CD5. The shown track numbers and time counter are not synchronized with the iPod. We recommend the use of this mode if you want original iPod functionality.

In iPod GW mode the click wheel or the touch screen is disabled², the iPod displays the currently played song information. (On iPod touch and iPhone the 'accessory attached' message will be displayed only.) iPod playback control is possible only from the car stereo (head unit or steering wheel). In this mode the track number and the time is displayed on the radio display (head unit dependent).

²Please note that on iPod touch and iPhone running iOS 6 or newer the iPod GW mode does not disable the control or normal display.

CD buttons have the following functions in different iPod modes:

CD#	iPod GW	iPod UI
CD1	1 st playlist	
CD2	2 nd playlist	
CD3	3 rd playlist	
CD4	4 th playlist	
CD5	play all	parking disc
CD6	set iPod UI mode	set iPod GW mode

Based on this you can select the first 4 playlists with CD1-CD4. During playback you can select next or previous playlists by pressing and holding the fast forward or fast rewind button (▶▶/◀◀) function button on the head unit (device dependent).

USB

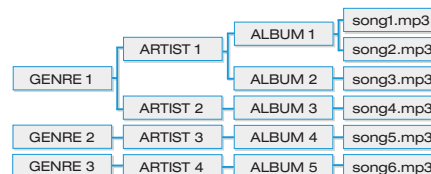
When you connect a USB drive, the Gateway will start to play in 'Play All' mode. If the Gateway has been used earlier with the same USB stick, then the music will play from the point last played. You can choose 4 main folders (assigned in alphabetical order) stored in the root directory by selecting CD1-CD4:

CD#	Function
CD1	1 st folder
CD2	2 nd folder
CD3	3 rd folder
CD4	4 th folder
CD5	play all
CD6	unused disc

During playback the radio displays CD and the track number with the time elapsed of the current track (Radio dependent). When CD1 through CD4 is selected, you can jump to the next or previous subfolder using the FF/REW (▶▶/◀◀) buttons. In 'Play All' mode (you can select it with CD5) all folders/subfolders can be reached and selected using the FF or REW function buttons.

Tips and Tricks:

You can easily define how the CD selection buttons are assigned by naming the folders as: 1-Rock, 2-Blues, 3-Pop, etc. as shown below:



Depending on how many music files do you copy on the USB stick, the indexing of these files may take some time. During this process of the Gateway you may not have access to your music. When changing the music content on your USB drive, it is highly recommended to delete the index files (GW_DBX.BIN) from the root folder.

Bluetooth audio (A2DP)

Gateway Lite BT supports audio playback via Bluetooth from a mobile phone using A2DP/AVRCP and HSP profiles. During the playback previous/next buttons (◀/▶) are functioning (phone dependent) from the car radio or the steering wheel. For music playback via bluetooth please disconnect all other devices (USB or iPod) that are connected to the Gateway Lite BT. Please note that with certain bluetooth devices:

- remote controlling may not be available
- the media player on the phone may have to be started/stopped manually

6. Enabling text display

Gateway Lite BT is designed for cars without text display – except for compatible BMW and Toyota models.

When installing the device in a BMW, the text (song info) can be displayed on several screens (Radio, MID or Navigation) and it has to be set after the Gateway installation. In order to activate text display mode you need to enter the **Text selector mode**:

- Turn the Radio ON and select the Gateway (CD Changer)
- Disconnect all devices from the Gateway and wait until 'Disc 5/Track99' appears

- Keep the next track button pressed (fast forward) for at least 10 seconds, then release. The display turns to 'Disc 1/Track01' within 3 seconds - this means you entered Text selector mode. (On most BMW radios you have an "m" button. If you want to reach the fast forward function in this case, then you may need to press the "m" button first to change the function of the (▶) button to fast forward)
- Press the next track button (▶) to toggle tracks 02 through 04 to set the screen mode
- Please note: track 01 is the non-text mode
- After setting the appropriate mode, press fast forward (holding down next track button for 3 seconds or by using the "m" button as mentioned) to confirm. Pressing the fast rewind button will exit the Text selector mode without any changes
- If the text selection procedure was correct AUX GW will appear on the display

Please note: Text display may be possible on some Toyota radios as well. In that case please press "DISP", "TXT" or "TEXT" button on the radio to activate it.

7. Hands free functions

Connecting a phone

Before connecting through Bluetooth you need to pair your phone with the Gateway. Please enter the Bluetooth menu on your phone (in 'tools', 'connections' or 'settings', etc.) search for available devices, select Gateway Lite BT and enter the code 8888 to connect. Check the connection status on the phone's screen. Your device is now paired and will automatically connect each time the Gateway is switched on and is near (phone dependent). If the reconnection procedure is not successful (or the Bluetooth was turned off on the phone) the Gateway tries to reconnect automatically. If the connection cannot be established or the Gateway Lite BT is not visible, please turn the radio and the ignition off, remove the car key, wait for a minute and retry the pairing procedure.

Receiving, making Phone calls and dialing

When you receive an incoming call in Gateway mode (CD changer mode), the music gets muted and the ringtone is directed to the speakers (phone dependent). Please wait for 4 seconds (it is needed till the hands free profile activates), then press the next track button (▶) to accept the call. You can terminate an ongoing or reject an incoming call by pressing the previous track button (◀). After finishing a call the Gateway will return to the original Gateway source.

If you have an incoming call when the radio or single CD source is playing, the actual audible content will be muted periodically (**the mute wire must be connected to the radio**). Select the CD changer source on the radio in order to answer the call (the call will be accepted automatically after 2 seconds when you switch the source.) After finishing the call, you can switch back to the previous source manually.

Dialing/making of a phone call is only possible if you initiate the call directly from your phone. Be sure that CD changer mode is selected otherwise the conversation will not be audible through the car speakers.

Changing the hands free quality and microphone sensitivity

If the factory default settings is not optimal for the hands free operations, press the **next track button (▶)** during the phone call to go through the 10 different volume values. If you find the optimal sound level, then you don't need to push the next button again, the volume level is saved and the next phone conversation will happen with these settings.

8. Troubleshooting

Symptom	Cause	Solution
USB is not recognized	Wrong file system	Check the file system (only FAT32 is supported)
	The content is write protected	Check the file settings
	Media is not supported	Use compatible file formats
	Problem with indexing	Delete index files from the root and index it again
No text display - although it was working earlier (only on BMW or Toyota)	iPod UI selected	Change the iPod mode to iPod GW mode
Radio is not muted	Mute wire is not connected to the radio	Please connect the mute wire according to the installation guide
Remote control is not working in Bluetooth audio mode	Bluetooth settings of the phone might be incorrect	Close all running application, delete pairing history, reboot the phone and pair it again.

9. Disclaimer

If your car's electrical system begins to behave in an unpredictable way please immediately disconnect the Gateway Lite BT device physically and have it checked by your installer or an automotive electronics professional. Dension and its authorized distributors and retailers are not liable for any incidental consequential or indirect damages or loss and do not assume liability for any diagnostic fees.

The use of handheld devices while driving may be subject to government legislation. Please ensure that your use of the Dension device complies with applicable traffic laws. Dension does not assume liability for any events resulting from the illegal or irresponsible use of handheld devices during the driving. Dension reserves the right to modify its products or specifications without prior notice.

10. Warranty

Dension devices carry a one-year limited warranty that protects you from defects in material and workmanship of products sold by Dension or its authorized distributors and retailers. Dension does not warrant any installation work or assume liability for any damage caused due to negligence, improper installation or operation. For warranty claims, proof of purchase is required.

11. Update and support

If you need further assistance in using your Gateway Lite BT, please contact your local supplier or visit www.dension.com/support. Please check the product section for the latest firmware version and product documentation of your device.